

FIREPRO CENTABUILD

FIREPRO CENTABUILD PTY LTD

128 Eldridge Rd Condell Park NSW 2200, AUSTRALIA

Ph: (02)9858 5597 & Ph: (02) 9804 0262 Fax: (02) 9858 5957

sales@firepro.com.au www.firepro.com.au

CI/SfB

B359 DATASHEET – Jan 17

Product specifications can change. Contact us to ensure you have our latest datasheet

FIREPRO B359 FIRE-HATCH

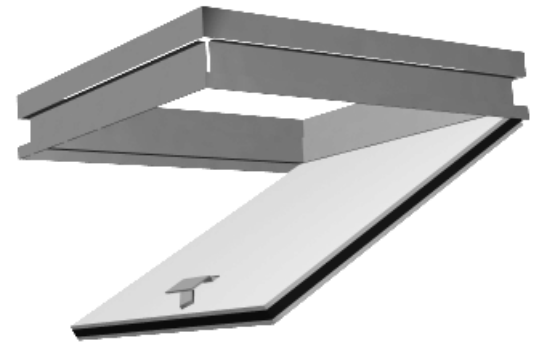
DESCRIPTION

B359 FIREPRO Fire-Hatches are designed to sit flush with the ceiling surface leaving only a narrow opening joint around the face with no protruding hinges. The hatch is secured by a locking key.

USES

B359 FIREPRO Fire-Hatches have a one hour fire rating. The hatches have fully concealed hinges and provide lockable security access to services. The hatches can be installed during construction, or after the ceiling has been lined. The adjustable slide-on type hinges allow the hatch door panel to be installed at the same time as the hatch frame or at a later stage of construction.

B359 is complete with separate steel plastering angle (product code B359-PA) or alternatively with an integral steel flange (product code B359-IF).



FEATURES

- Flush Fitting
- Universal Lock
- Plastering Angle or Integral Flange
- Concealed Hinges
- Safety Chain

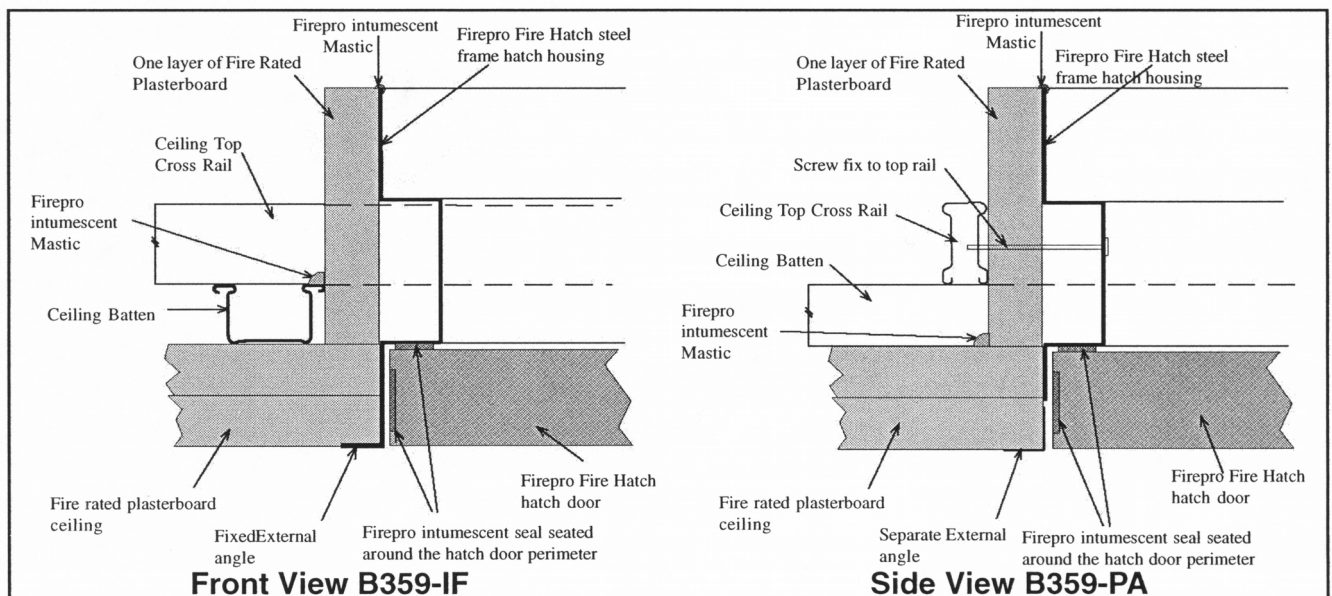
B359 HATCH STOCK SIZES

Size (nominal)
300mm x 300mm
400mm x 400mm
450mm x 450mm
530mm x 530mm
600mm x 600mm

B359 FIRE TEST DATA

Fire-Hatch has been tested to AS1530 Part 4. Integrity and Insulation for 1 hour fire rating.

Test Certificate F.L.P.55417.



NOTE: The technical information and suggestions for use and application presented herein represent the best information available to us and are believed to be reliable. If used beyond the situations detailed on this datasheet we advise confirming their suitability before installation. All dimensions are nominal.

We reserve the right to make changes or to withdraw designs and products without notice.